

Parish Council Newsletter



www.rbwm.gov.uk



[View as Webpage](#)

Parish Council Newsletter

Welcome to the Royal Borough of Windsor & Maidenhead's e-shot for Parish Councils.

This monthly digest is designed to help keep you up to date with the latest news from the Royal Borough and give you the opportunity to get involved in consultations and other community projects.

If you have content you'd like to see included in future editions, please contact communications@rbwm.gov.uk. You can also keep up to date with the latest from the council via the council's social media channels.



Waste collection changes will support Environment and Climate Strategy

From **Monday 18 October 2021**, our rubbish collections will change, making weekly collections more sustainable and environmentally friendly to support the council's Environment and Climate Strategy.

By maintaining and securing the weekly bin collection for recycling and food waste for the future, the Royal Borough remains in just 20% of councils that continue to have a weekly bin collection. As residents are increasingly recycling more and throwing away less, it is important to spend their money wisely and do our bit to reduce our carbon footprint.

From Monday 18 October, waste (black bins) will be collected fortnightly. In addition, the council will return to a five-day collection, Monday to Friday. These changes mean 71% of residents will see a change to their general waste collection day.

These changes, announced today, place greater emphasis on recycling household waste, which in turn will reduce the environmental impact and carbon footprint of the borough. Around 50% of household waste in the borough is currently recycled, but we are calling on residents to help increase this to at least 65%.

This target helps meet the aims in our Environment and Climate Strategy, which includes a commitment to achieving net zero carbon emissions by 2050.

Our waste collection contractor, Serco, will be providing additional customer advisors to help deal with enquiries about the service change and we've launched a wide-ranging public communications campaign, including householder leaflets, website updates, e-shots, a press briefing and ongoing social media activity.

To ensure that this change goes as smoothly as possible, we have produced a special edition of [Residents Newsletter](#) to help prepare residents for the changes in plenty of time. This is part of a wide-ranging public communications campaign, including householder leaflets, website updates, e-shots, a press briefing and ongoing social media activity.

You can learn more by seeing our [waste collection Q&As](#), or reading our [press release](#).



Private landlords invited to support Afghan resettlement scheme

Following our successful appeal for donations to support Afghan refugees, the Royal Borough of Windsor & Maidenhead is inviting the support of private sector landlords to help provide places for refugees to call home.

Our Housing Service is giving private sector landlords the opportunity to play an important role in the response by offering accommodation for refugees.

Officers would like to hear from anyone who can make available self-contained housing, of any kind, including for singles, couples and families.

Support will be provided through our Private Rented Access Scheme, which works with landlords and households who are on a low income or are in receipt of welfare support. The scheme provides landlords and tenants with a range of support services to create sustainable tenancies.

If you, or anyone in your communities, would like to know more about the scheme or offer housing for refugees, please contact our Private Rented Sector Officer by email at Housing@RBWM.gov.uk.

Learn more in [our press release](#).



Afghan refugees appeal: Donations drop-off point now closed

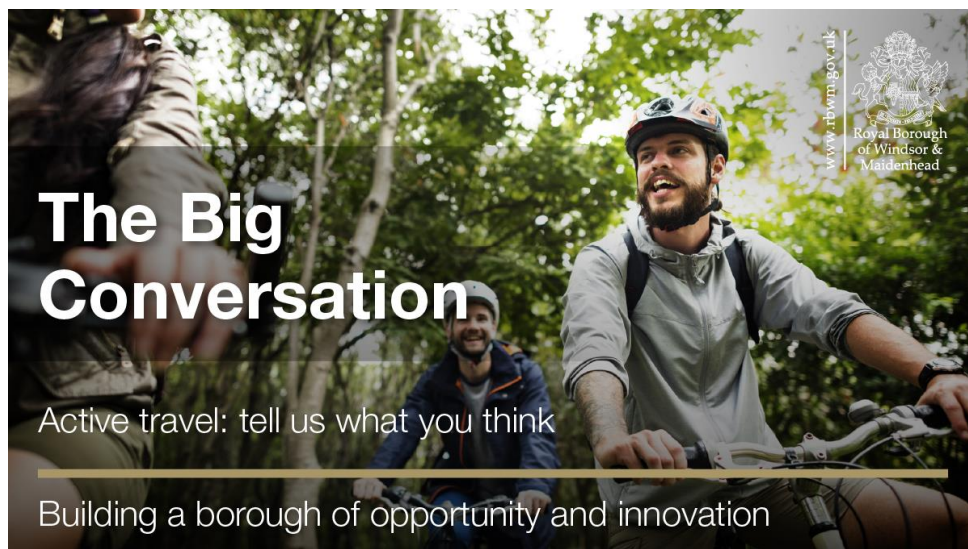
A huge thank you to everyone who gave so generously to our appeal for in-kind donations to support the Afghan refugees due to arrive in the Royal Borough under the resettlement scheme.

In just two weeks, we've been inundated with around 1,000 bags of donations, ranging from clothing, to toiletries to baby items. These are being sorted and categorised to ensure that items can be quickly dispatched to those in need.

While our drop-off point for in-kind donations is **now closed** following this huge community response, people wishing to make cash donations to support the resettlement scheme can still give to the Slough Refugee Support, an established charity which provides practical help to refugees across the Thames Valley.

Donations can be made online at www.sloughrefugeesupport.org.uk where there is further information about ways to donate, or you can call 01753 537142 for more information. Monetary donations should be referenced "Afghan refugees".

Any in-kind donations which are surplus to the needs of Afghan refugees resettling in the local area will be distributed to wider refugee groups or homeless households in need.



Opinions on Active Travel needed to start Big Conversation

Residents of the Royal Borough are being asked to share their ideas to help shape walking and cycling improvements in the area.

The council has launched a 'Big Conversation' to listen to your views and is welcoming suggestions on Active Travel measures in the borough. This public consultation opened on Monday and runs until **Sunday 3 October**.

Feedback will help inform a Local Cycling and Walking Infrastructure Plan to help identify how to make improvements supporting cycling and walking, and where investment is needed in the short, medium and long-terms.

Alongside the consultation, a number of drop-in sessions have been organised to explain more about Active Travel and its themes.

These will be held at:

- Sunningdale Parish Office, 8 September, 4pm-7pm
- Windsor Library, 14 September, 4pm-7pm
- Old Windsor Library, 27 September, 4pm-7pm
- Maidenhead Library, 29 September, 4pm-7pm

There will also be an online discussion session, via Microsoft Teams on Thursday 9 September, 5:30pm-7:30pm.

To find out more, read our [press release](#) and please continue to promote the consultation by sharing the social media posts.



Congratulations to our local Paralympic athletes

The Royal Borough would like to say huge congratulations to Maidenhead powerlifter Louise Sugden and canoer Jeanette Chippington MBE for their bronze medals at the Tokyo 2020 Paralympics.

We are looking forward to recognising all our Olympic and Paralympic athletes now that both sets of Games in Tokyo have drawn to a close.

To reflect the pride felt by the whole community in their fantastic success, the Council Leader will be putting forward our local Olympians and Paralympians to be granted Freedom of the Royal Borough and the Mayor will be congratulating them in person.

This honour will extend to those who were part of the team but unable to take part due to Covid.



Crucial work extends life of Windsor bridge

A £2.1 million project to extend the life of Queen Elizabeth Bridge in Windsor has been completed.

Investment in the 1960s-built infrastructure, a key link between Windsor and the M4 motorway over the River Thames, was necessary due to corrosion of some of the steel components over time.

The essential repairs and improvements to the bridge included concrete repairs, expansion joints, and waterproofing the structure.

To find out more, read our [press release](#).

**Make sure your
correct details are
on the electoral
register**

The
Electoral
Commission

An illustration of a document with a green checkmark in the top left corner. A magnifying glass is positioned over the document, focusing on the text. The document has several lines of text and a table at the bottom.

www.rbwm.gov.uk

Royal Borough
of Windsor &
Maidenhead

Electoral registration annual canvass

The council's Electoral Services team is running its annual canvass, with emails and paper forms being sent to residents across the Royal Borough between now and November.

The annual canvass is undertaken to determine which residents should be registered to vote at each address. This information is used to update the electoral register for 2022.

We are sending emails to some residents who are already registered, asking them to go to www.elecreg.co.uk/rbwm-e and check the register details for their household. The emails will come from electoral.registration.rb.windsor.and.maidenhead@notifications.service.gov.uk.

From **Friday 10 September**, we will start to send out the paper forms to properties. Full details about what you need to do and how to respond will be included in the information you receive.

Where possible, we are encouraging residents to confirm their details online using the information sent to them, rather than posting paper forms back to us, as this is the quickest and easiest way to update the details for households, and is more environmentally-friendly too. For more information, visit [our website](#), call 01628 683868 or email electoral.registration@rbwm.gov.uk.



Independent examination hearing to help finalise joint Minerals and Waste Plan

The Royal Borough of Windsor & Maidenhead is working with Bracknell Forest Council, Reading Borough Council and Wokingham Borough Council to finalise a joint Minerals and Waste Plan for these areas.

Shaped through a series of consultations over the last four years, the joint plan is a strategic document which will guide decision-making and activities around mineral extraction and waste management across the central and eastern Berkshire authorities until 2036.

The councils submitted the joint plan for its required independent examination in February 2021. As part of this process, which focusses on the soundness of the plan, two independent planning inspectors are holding examination hearings at Maidenhead Town Hall, on **28, 29 and 30 September 2021**, from 10am to 4pm.

The sessions can be attended by anyone. If you would like to attend, please contact the programme officer [Stephanie Street](#) or calling 0370 779 2422. For further information, please visit [this website](#).



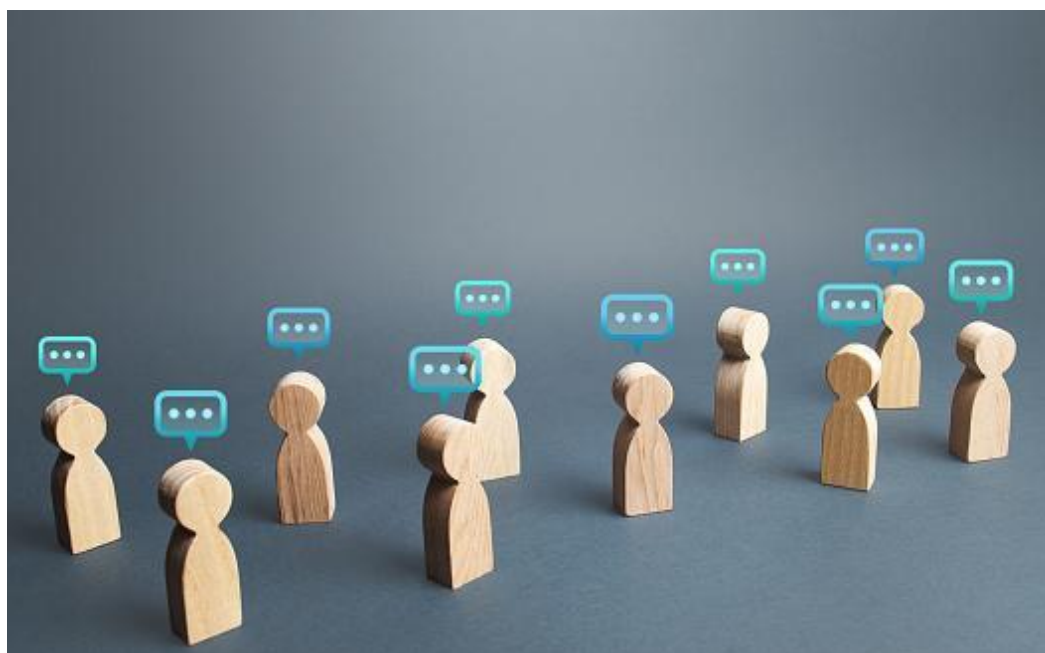
September's Advantage Card offers

The Advantage Card September offers are out! This month you can win [Windsor Festival tickets](#) and there are offers from [Ascot Racecourse](#), [The](#)

[Savill Garden](#), [Rush Windsor and Rush Maidenhead](#), [Eton Leathergoods Repairs](#), and [Emotional Fitness: A-Z](#).

See full details on [our website](#).

If you haven't done so already, [sign up](#) to receive our special Advantage Card offer emails.



Have your say

We regularly hold consultations to get your views on proposals within the Royal Borough.

Responding to our consultations and giving your feedback is the best way to ensure your views are heard.

Our current consultations are:

- [Active Travel consultation](#) - Sunday 3 October
- [Draft Corporate Plan consultation](#) – deadline Sunday 12 September (next week)
- [Gambling consultation](#) – deadline Friday 10 September (this week)
- [Single person discount review](#) – ongoing consultation
- [Developing proposals for new school places - provide comments on the feasibility studies for school expansion](#) – ongoing consultation

More information can be found [on the consultations pages of our website](#).

All the latest at your fingertips

We publish our weekly Residents' Newsletter, featuring all the latest local news Royal Borough residents need to know about.

Please encourage those in your community to [sign up on our website](#).

Keep in touch

Keep up to date with news and information from the council by [signing up to Nextdoor](#) and following us on [Twitter](#) and [Facebook](#).

Other accounts you may be interested in:

- Royal Borough official [tourism web page](#).
- Libraries on [Facebook](#) and [Twitter](#).
- Windsor & Royal Borough [Museum web page](#).
- MyRoyalBorough on [Twitter](#), [Facebook](#) and [Instagram](#).
- Make Maidenhead on [Twitter](#) and [Facebook](#).

Communications & Marketing Team
Royal Borough of Windsor & Maidenhead
Town Hall, St Ives Road,
Maidenhead,
Berkshire,
SL6 1RF

 01628 796305
 communications@rbwm.gov.uk

The Royal Borough of Windsor & Maidenhead | Town Hall, St Ives Road, Maidenhead,
SL6 1RF, Berkshire United Kingdom

Sent by communications@rbwm.gov.uk